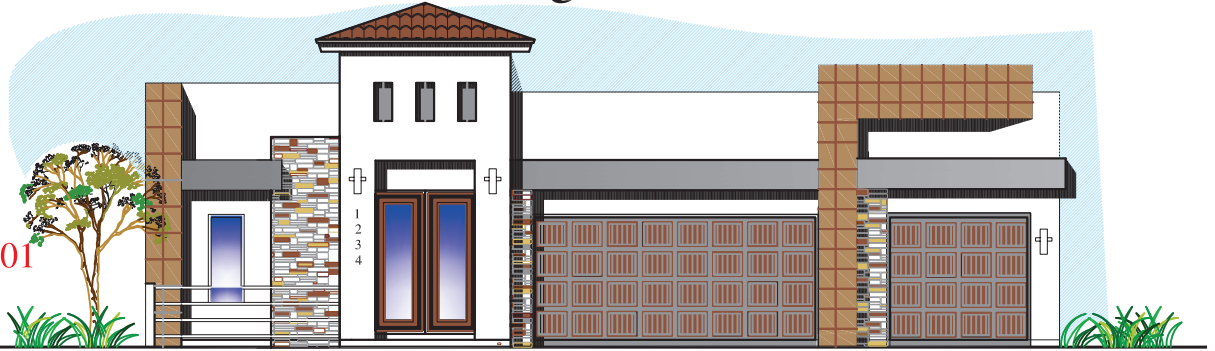


MALAGA



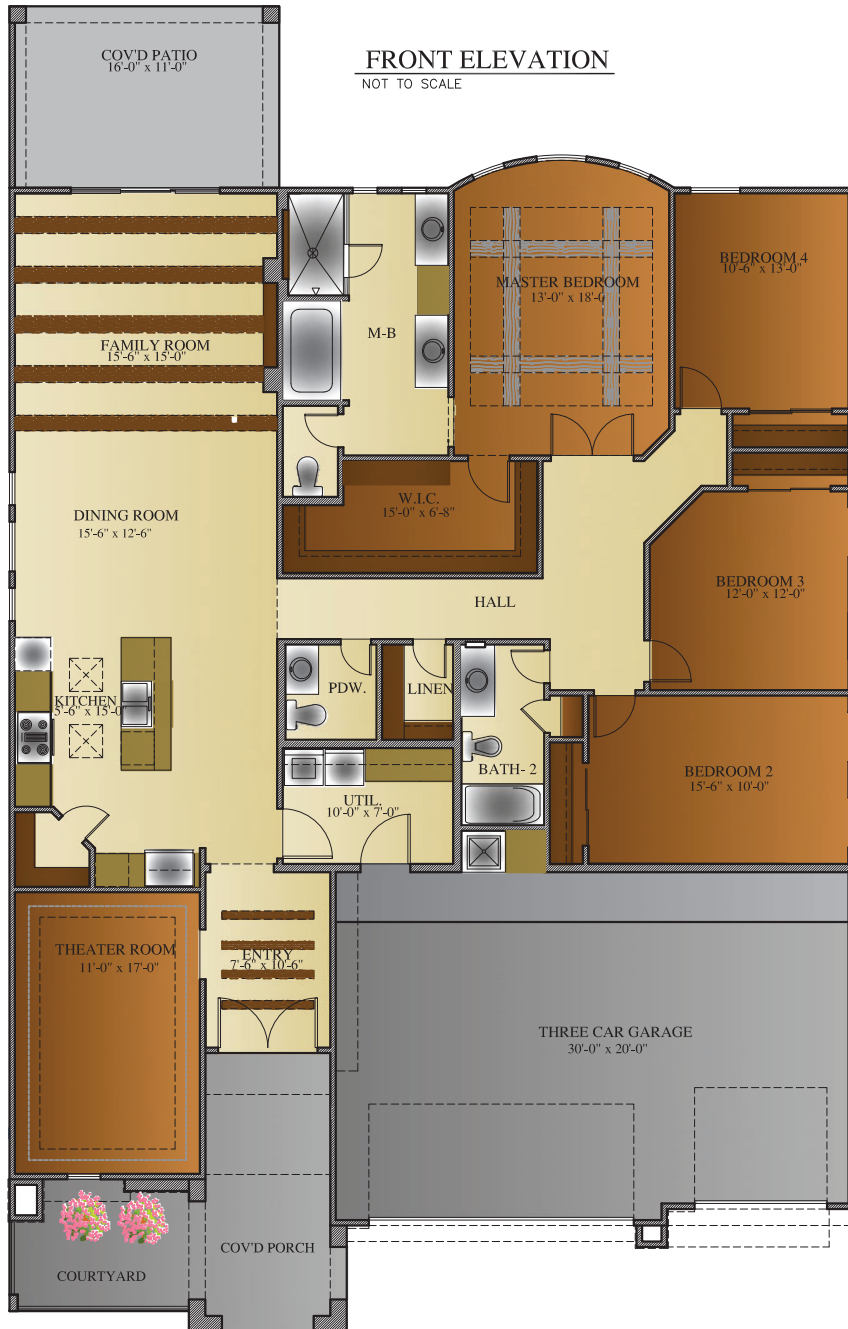
MAL-223-2022-01



LIVING AREA:
2420 S.F.

BEDROOMS: 4
THEATER ROOM
BATHS: 2 1/2
WIDTH: 51'-0"
DEPTH: 61'-8"

FRONT ELEVATION
NOT TO SCALE



FLOOR PLAN
NOT TO SCALE

NOTICE TO CONSUMER: All marketing materials are SOLELY for concept illustration purposes. All square footages area MERELY approximations. As we improve our product, BIC HOMES reserves the independent right to CHANGES WITHOUT NOTICE before closing among other items, the following: Sales prices, buyes incentives, availability lists, floor plans, elevations, features & finishes, specifications, materials, product brands, processes, completion dates, option/selection cut off dates, window and door styles, rock walls, gate and driveway locations, garage orientations, ceiling heights, colors, landscaping . HOA fees and lot premiums may apply in certain communities. All agreements must be in writing. Please read your purchase agreement for warranty information and construction standards. Rev. 9-4-2020