



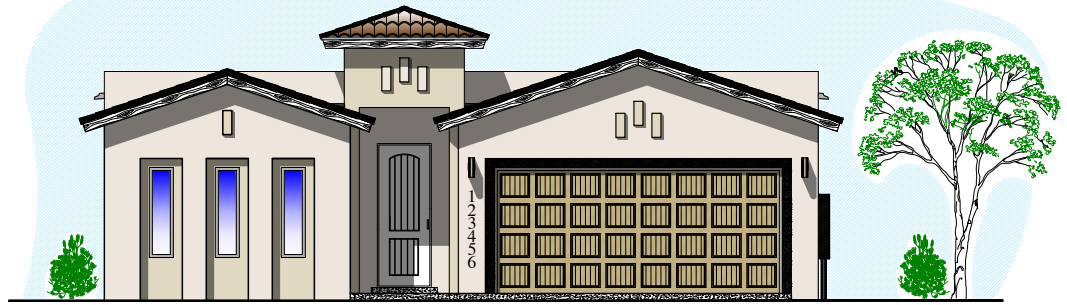
# SANTA CLARA

SCL-TRN-202401

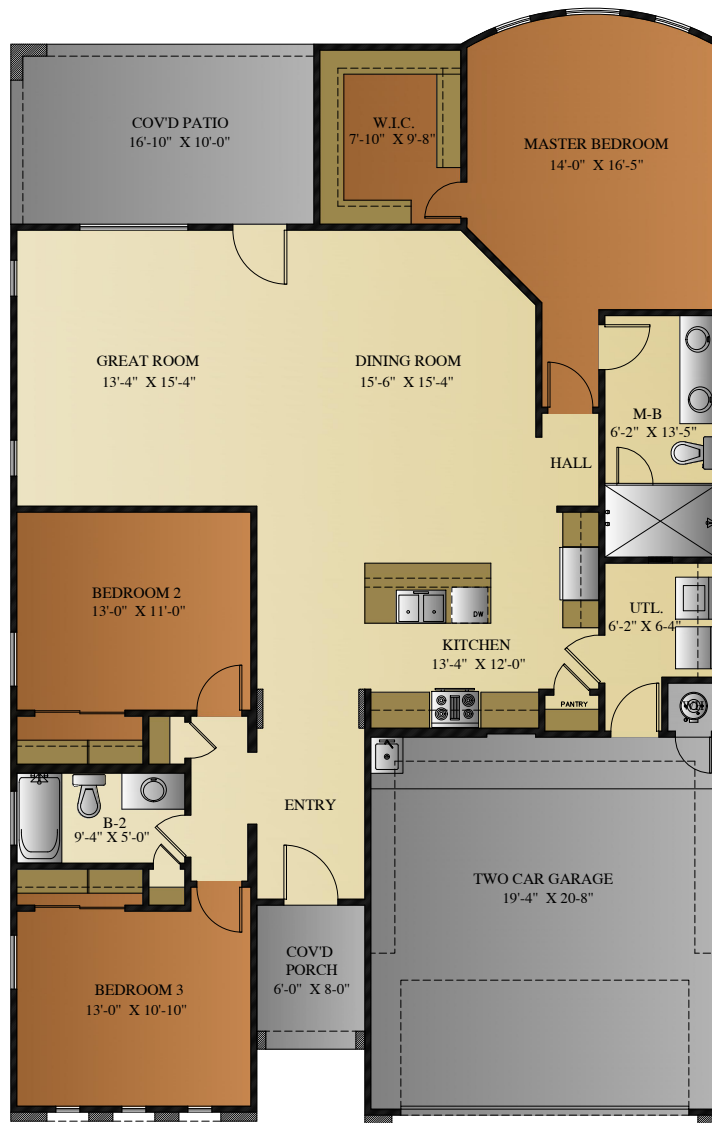
LIVING AREA:  
1722 S.F.

BEDROOMS: 3  
BATHS: 2

WIDTH: 39'-8"  
DEPTH: 62'-0"



**FRONT ELEVATION**  
NOT TO SCALE



**FLOOR PLAN**  
NOT TO SCALE

NOTICE TO CONSUMER: All marketing materials are SOLELY for concept illustration purposes. All square footages are MERELY approximations. As we improve our product, BIC HOMES reserves the independent right to CHANGES WITHOUT NOTICE before closing, among other items, the following: Sales prices, buy-incentives, availability lists, floor plans, elevations, features & finishes, specifications, materials, product brands, processes, completion dates, option/selection cut off dates, window and door styles, rock walls, gate and driveway locations, garage orientations, ceiling heights, colors, landscaping. HOA fees and lot premiums may apply in certain communities. All agreements must be in writing. Please read your purchase agreement for warranty information and construction standards. Rev. 9-4-2020



## Santa Clara -Transitional Plan Features Matrix

| Plan Name                             | Santa Clara Plan-SCL-TRN 202401  | Comments  |
|---------------------------------------|--|---|
| <b>Living Area</b>                    | <b>1722</b>  |   |
| <b>Home Interior</b>                  |  |   |
| Floors                                | <b>LIVING AREA:</b> Ceramic Tile<br><b>SHOWER FLOOR:</b> Tile<br><b>CARPET:</b> Only in bedrooms and closets   | Style and Color defined by CS<br>Style and Color defined by CS<br>Style and Color defined by CS |
| Walls                                 | <b>SHOWER:</b> Ceramic tile (optional decorative trim)<br>Brocade Texture on walls & ceilings. Rounded Corners on main walls.                        | Style and Color defined by CS<br>Style and Color defined by CS                                  |
| Backsplash                            | <b>KITCHEN:</b> Ceramic Tile   | Style and Color defined by CS   |
| Countertops                           | Depending on color package selection may include 3 cm Granite or Quartz. The same throughout the entire home   | Style and Color defined by CS   |
| Sinks                                 | <b>BATHROOM:</b> Undermount white square bowl<br><b>Mop Sink:</b> In the garage<br><b>KITCHEN:</b> Undermount stainless steel sink 8" deep           |   |
| Cabinets                              | <b>LAUNDRY ROOM:</b> Included in upper wall<br><b>KITCHEN AND BATH:</b> Cabinets with Crown Molding, adjustable shelves<br><b>WINE RACK:</b> Kitchen | Style and Color defined by CS<br>Style and Color defined by CS                                  |
| Doors                                 | <b>FRONT:</b> Fiberglass faux wood solid core door<br><b>BACK PATIO DOOR:</b> Tri Panel sliding door<br><b>PANTRY:</b> Included                      | Style and Color defined by CS<br>Style and Color defined by CS                                  |
| Mirrors                               | Depending on color package selected may include Framed or frameless Mirrors  | Style and Color defined by CS   |
| Windows coverings                     | Included   | Style and Color defined by CS   |
| Ceiling Fans                          | All bedroom & Family room  | Style and Color defined by CS   |
| Ceilings Height                       | 9' high ceilings (lower furdowns for A/C ducts and/or water lines)   |   |
| Trim, molding and doors casing        | 2 1/2" base molding & door casing  | Style and Color defined by CS   |
| <b>Bathroom</b>                       |  |   |
| Master Bathroom Tub Style             | N/A  |   |
| Shower Doors                          | Included   | Style and Color defined by CS   |
| Toilets                               | Elongated toilets  |   |
| <b>Kitchen</b>                        |  |   |
| Appliances                            | Package 1. Stainless Steel 5 burner free standing range, microwave-hood,dishwasher & oven in stove   | Upgrade available to Gourmet Kitchen Appliances   |
| <b>Plumbing &amp; Electrical</b>      |  |   |
| Plumbing Fixtures                     | Included   | Style and Color defined by CS   |
| Light Package                         | Include: Dinning & Entry Chandelier, Vanity mounted lights, Kitchen Pendants and LED Disk  | Style and Color defined by CS   |
| Hardware Package                      | Door handles and hinges  | Style and Color defined by CS   |
| Prewire                               | Package A. Pre-wire included for phone, 4 channel surround sound in living room, 1 data port internet ready, TV + DSS                                | Prewire only. Speakers and equipment not included.  |
| <b>Exterior and Garage</b>            |  |   |
| Exterior Light                        | Decorative wall mounted lights in Front of home and 1 double spot lamp included in rear of home (Flood Lamp)   | Style and Color defined by CS   |
| Roofing                               | Flat roof( Low-slope roofing) with roof tile on the front  | Style and Color defined by CS   |
| Driveway                              | Standard   |   |
| Front Elevation                       | Included decorative siding   | Style and Color defined by CS   |
| Rockwall                              | Rock wall height and length determined by area and site  | Per community   |
| Exterior walls covering               | Wall synthetic colored stucco application and siding   | Style and Color defined by CS   |
| Landscape                             | Rockscape from side gates to front property line and parkway   | Per community   |
|                                       | <b>LANDSCAPE ROCK:</b> Depending on color package  | Style and Color defined by CS   |
|                                       | <b>LANDSCAPE OPTION:</b> (See Below)   | Style and Color defined by CS   |
|                                       | <b>OPTION A:</b> Turf Option<br><b>OPTION B:</b> Two tone Rock option  |   |
| Garage Door Opener                    | N/A  | Upgrade Available   |
| Exterior Outlets for Christmas Lights | 2 outlets included   |   |
| Built-in Shelves in Garage            | Included   |   |

| Energy Efficiency          |   |  |
|----------------------------|---|--|
| Energy Star Certified Home | Included  |  |
| Heating and cooling        | 14 seer A/C unit, 80% efficiency heater unit                    |  |
| Insulation - Garage        | Garage door insulated, BATT insulation walls R11, Ceiling R19   |  |
| Insulation - Home          | 100% Energy Star Insulated                                      |  |
| Manabloc Plumbing System   | Home run line to each outlet from Manabloc control panel        |  |
| Water Heater               | Natural Gas Tank Water Heater                                   |  |
| Windows                    | Double pane low E glass Vinyl windows, edges wrapped and sealed |  |
| A/C Duct system            | Highly efficient duct system                                    |  |
| Structure & Warranty       |   |  |
| Foundation - Concrete Slab | Engineered foundation design with monolithic post tension slab  |  |
| Walls and Roof Structure   | 2"x4" @ 16" o.c. load bearing walls with engineered trusses     |  |
| Warranty                   | 1 Year Builder Warranty + 2-10 "Home of Texas" Warranty         |  |

**\* Features list not valid unless signed by seller and included as part of purchase agreement.**

**NOTICE TO CONSUMER:** All marketing materials are SOLELY for concept illustration purposes. All square footages are MERELY approximations. As we improve our product, BIC Homes reserves the BIC Homes feature list is provided as a general inclusion of items specific to this floor plan. Please note you may see some differences in your home. If home was started prior to this contract, and

Customer Signature:

Customer Signature:

Builder Signature: