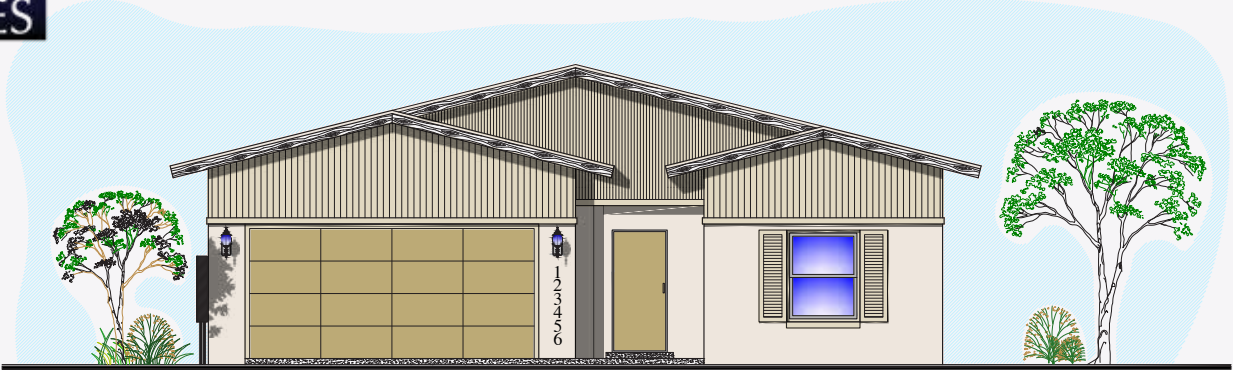




GARLAND- TRD-202401



WIDTH: 40'-0"
DEPTH: 60'-0"

FRONT ELEVATION
NOT TO SCALE

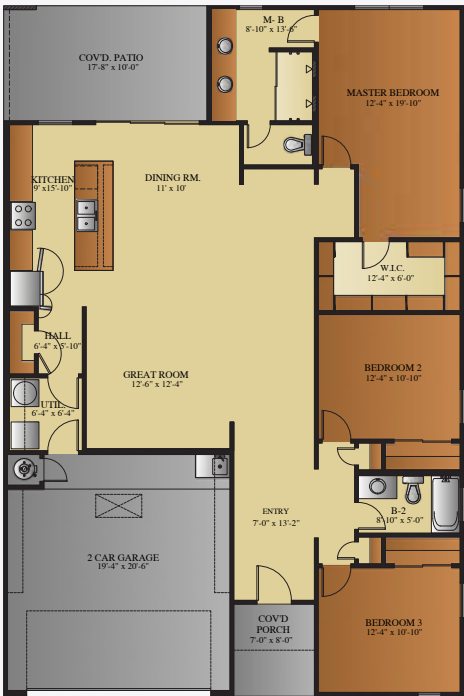
ABOUT THE PROPERTY

Introducing the Garland by BIC Homes, a stunning masterpiece. This single-story home features three bedrooms and two bathrooms. The kitchen boasts tiled backsplash, 3cm thick granite or quartz countertops, and stainless steel appliances. Cabinets with crown molding, that are available in several color options, with adjustable shelves to add functionality and style.

Tiled flooring throughout the main living areas exudes sophistication, while plush carpeting adds comfort to the bedrooms. The primary suite offers a walk-in closet, and there are two ample-sized secondary bedrooms.

Other highlights include a separate laundry room, fully insulated garage with prewiring for a garage opener, and a manabloc system for convenience. Enjoy the covered patio off the back and front.

Photos are for illustration purposes only. Features and details are subject to change without notice.




FLOOR PLAN
NOT TO SCALE


3 bedrooms


2 bathrooms

FOR MORE INFORMATION
VISIT OUR OFFICE OR CALL US!


1,752 sq. ft.


2 car garage

11440 MONTWOOD DR, EL PASO, TX 79936

915.246.8796

SCAN THE BARCODE TO VISIT
OUR WEBSITE



NOTICE TO CONSUMER: All marketing materials are SOLELY for concept illustration purposes. All square footages are MERELY approximations. As we improve our product, BIC HOMES reserves the independent right to CHANGES WITHOUT NOTICE before closing, among other items, the following: Sales prices, buy incentives, availability lists, floor plans, elevations, features & finishes, specifications, materials, product brands, processes, completion dates, option/selection cut off dates, window and door styles, rock walls, gate and driveway locations, garage orientations, ceiling heights, colors, landscaping. HOA fees and lot premiums may apply in certain communities. All agreements must be in writing. Please read your purchase agreement for warranty information and construction standards. Rev. 9-4-2020





GARLAND- TRN-202401



WIDTH: 40'-0"
DEPTH: 60'-0"

FRONT ELEVATION
NOT TO SCALE

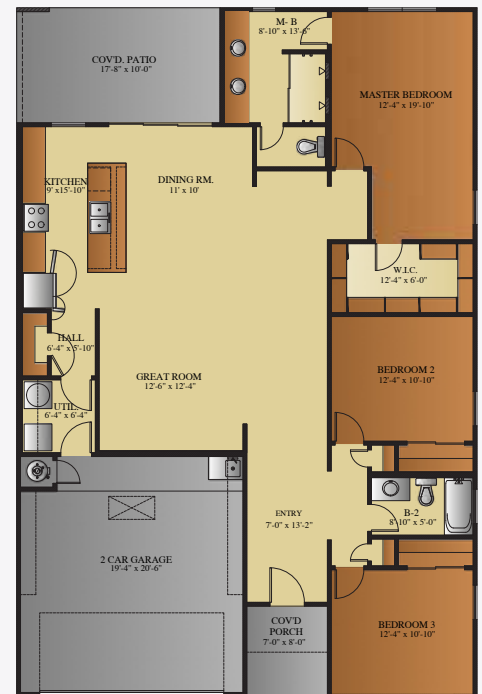
ABOUT THE PROPERTY

Introducing the Garland by BIC Homes, a stunning masterpiece. This single-story home features three bedrooms and two bathrooms. The kitchen boasts tiled backsplash, 3cm thick granite or quartz countertops, and stainless steel appliances. Cabinets with crown molding, that are available in several color options, with adjustable shelves to add functionality and style.


Tiled flooring throughout the main living areas exudes sophistication, while plush carpeting adds comfort to the bedrooms. The primary suite offers a walk-in closet, and there are two ample-sized secondary bedrooms.


Other highlights include a separate laundry room, fully insulated garage with prewiring for a garage opener, and a manabloc system for convenience. Enjoy the covered patio off the back and front.

Photos are for illustration purposes only. Features and details are subject to change without notice.




FLOOR PLAN
NOT TO SCALE


3 bedrooms


2 bathrooms

FOR MORE INFORMATION
VISIT OUR OFFICE OR CALL US!


1,752 sq. ft.


2 car garage

11440 MONTWOOD DR, EL PASO, TX 79936

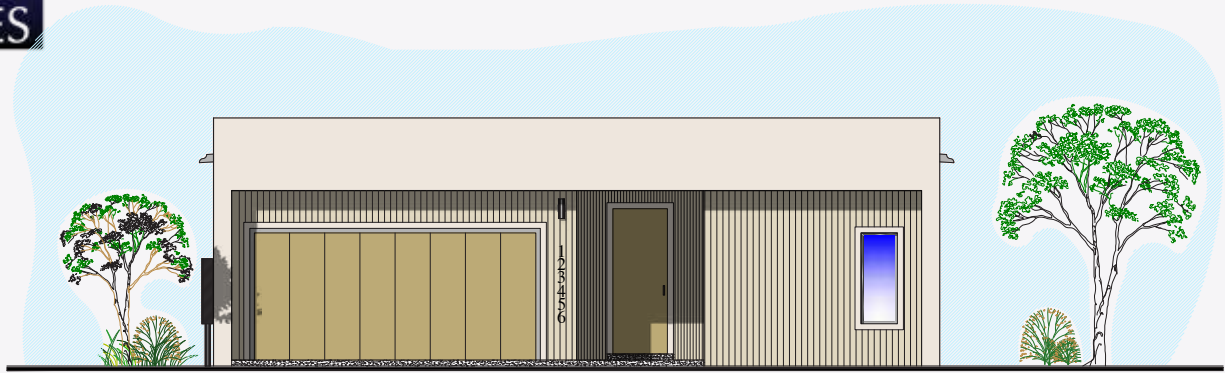
915.246.8796

SCAN THE BARCODE TO VISIT
OUR WEBSITE





GARLAND- CON-202401



WIDTH: 40'-0"
DEPTH: 60'-0"

FRONT ELEVATION
NOT TO SCALE

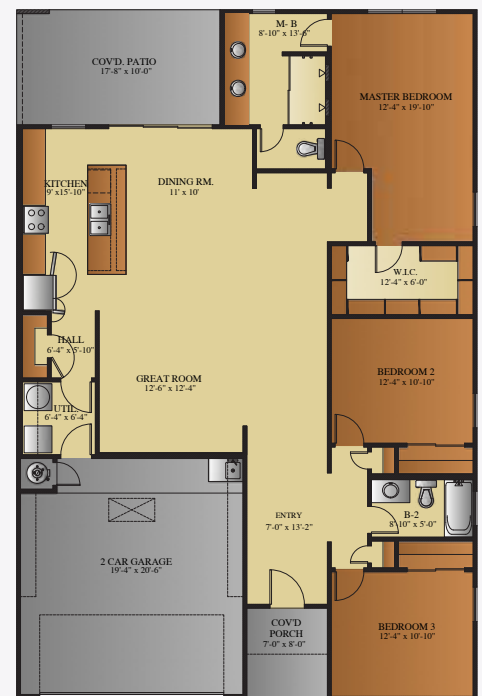
ABOUT THE PROPERTY

Introducing the Garland by BIC Homes, a stunning masterpiece. This single-story home features three bedrooms and two bathrooms. The kitchen boasts tiled backsplash, 3cm thick granite or quartz countertops, and stainless steel appliances. Cabinets with crown molding, that are available in several color options, with adjustable shelves to add functionality and style.


Tiled flooring throughout the main living areas exudes sophistication, while plush carpeting adds comfort to the bedrooms. The primary suite offers a walk-in closet, and there are two ample-sized secondary bedrooms.


Other highlights include a separate laundry room, fully insulated garage with prewiring for a garage opener, and a manabloc system for convenience. Enjoy the covered patio off the back and front.

Photos are for illustration purposes only. Features and details are subject to change without notice.



FLOOR PLAN
NOT TO SCALE



3 bedrooms


2 bathrooms

FOR MORE INFORMATION
VISIT OUR OFFICE OR CALL US!

11440 MONTWOOD DR, EL PASO, TX 79936


1,752 sq. ft.


2 car garage

915.246.8796

SCAN THE BARCODE TO VISIT
OUR WEBSITE





GARLAND-TRD,TRN,CON 202401

Home Features List

Living Area: 1,752 sf

Home Interior		
Floors	LIVING AREA: Ceramic Tile	Style and Color defined by CS
	SHOWER FLOOR: Tile	Style and Color defined by CS
	CARPET: Only in bedrooms and closets	Style and Color defined by CS
Walls	SHOWER: Ceramic tile (optional decorative trim)	Style and Color defined by CS
	Brocade Texture on walls & ceilings. Rounded Corners on main walls.	Style and Color defined by CS
Backsplash	KITCHEN: Ceramic Tile	Style and Color defined by CS
Countertops	Depending on color package selection may include 3 cm Granite or Quartz. The same throughout the entire home	Style and Color defined by CS
Sinks	Garage : Mop Sink	
	BATHROOM: Undermount white square bowl	
	KITCHEN: Undermount stainless steel sink 8" deep	
Cabinets	LAUNDRY ROOM: Included in upper wall	Style and Color defined by CS
	KITCHEN AND BATH: Cabinets with Crown Molding, adjustable shelves	Style and Color defined by CS
	WINE RACK: Kitchen	
Doors	FRONT: Fiberglass faux wood solid core door	Style and Color defined by CS
	BACK PATIO DOOR: Tri Panel sliding door	
	PANTRY: Included	Style and Color defined by CS
Mirrors	Depending on color package selected may include Framed or frameless Mirrors	Style and Color defined by CS
Windows coverings	Included	Style and Color defined by CS
Ceiling Fans	All Bedrooms and Family room	Style and Color defined by CS
Ceilings Height	9' high ceilings (lower furdowns for A/C ducts and/or water lines)	
Trim, molding and doors casing	2 1/2" base molding & door casing	Style and Color defined by CS
Bathroom		
Master Bathroom Tub Style	N/A	
Shower Doors	Included	Style and Color defined by CS
Toilets	Elongated toilets	
Kitchen		
Appliances	Package 1. Stainless Steel 5 burner free standing range, microwave-hood,dishwasher & oven in stove	Upgrade available to Gourmet Kitchen Appliances
Plumbing & Electrical		
Plumbing Fixtures	Included	Style and Color defined by CS
Light Package	Include: Dinning & Entry Chandelier, Vanity mounted lights, Kitchen Pendants and LED Disk	Style and Color defined by CS
Hardware Package	Door handles and hinges	Style and Color defined by CS
Prewire	Package A. Pre-wire included for phone, 4 channel surround sound in living room, 1 data port internet ready, TV + DSS	Prewire only. Speakers and equipment not included.
Exterior and Garage		
Exterior Light	Decorative wall mounted lights in Front of home and 1 double spot lamp included in rear of home (Flood Lamp)	Style and Color defined by CS
Roofing	TRD- Shingle Roof /TRN-Shingle Roof/ CON-Flat roof (low-slope roofing)	
Driveway	Standard	
Front Elevation	Included decorative siding	Style and Color defined by CS
Rockwall	Rock wall height and length determined by area and site	Per community
Exterior walls covering	Wall synthetic colored stucco application and siding	Style and Color defined by CS
Landscape	Rockscape from side gates to front property line and parkway	Per community
	LANDSCAPE ROCK:Depending on color package	Style and Color defined by CS
	LANDSCAPE OPTION: (See Below)	Style and Color defined by CS
	OPTION A: Turf Option	
Garage Door Opener	N/A	Upgrade Available
Exterior Outlets for Christmas Lights	2 outlets included	
Built-in Shelves in Garage	Included	
Energy Efficiency		
Energy Star Certified Home	Included	
Heating and cooling	14 seer A/C unit, 80% efficiency heater unit	
Insulation - Garage	Garage door insulated, BATT insulation walls R11, Ceiling R19	
Insulation - Home	Blown-in insulation on exterior Walls R15, Ceilings R38	
Manabloc Plumbing System	Home run line to each outlet from Manabloc control panel	
Water Heater	Natural Gas Tank Water Heater	
Windows	Double pane low E glass Vinyl windows, edges wrapped and sealed	
A/C Duct system	Highly efficient duct system	
Structure & Warranty		
Foundation - Concrete Slab	Engineered foundation design with monolithic post tension slab	
Walls and Roof Structure	2"x4" @ 16" o.c. load bearing walls with engineered trusses	
Warranty	1 Year Builder Warranty + 2-10 "Home of Texas" Warranty	

* Features list not valid unless signed by seller and included as part of purchase agreement.

NOTICE TO CONSUMER: All marketing materials are SOLELY for concept illustration purposes. All square footages are MERELY approximations. As we improve our product, BIC Homes reserves the independent right to CHANGE WITHOUT NOTICE before closing, among other items, the following: Sales prices, buyer incentives, availability lists, floor plans, elevations, features & finishes, specifications, materials, product brands, processes, completion dates, option/selection cut off dates, window and door styles, rock walls, gate and driveway locations, garage orientations, ceiling heights, colors, landscaping. HOA fees and lot premiums may apply in certain communities. All agreements must be in writing. Please read your purchase agreement for warranty information and construction standards. Rev. 9-4-2020

BIC Homes feature list is provided as a general inclusion of items specific to this floor plan. Please note you may see some differences in your home. If home was started prior to this contract, and selections were done, or if this home was previously contracted, it is possible that some of these items were changed. You may review any specifics at your color review appointment.. Rev. 2-18-2022