



ABILENE- TRD-202402



FRONT ELEVATION
NOT TO SCALE

ABOUT THE PROPERTY

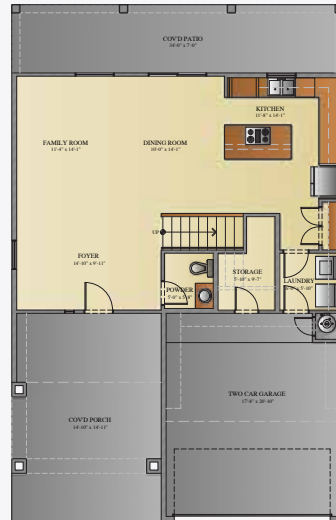
The Abilene Home is a stunning two-story residence offering 1,968 square feet of thoughtfully designed living space. This beautiful home features 3 spacious bedrooms and 2.5 bathrooms, perfect for accommodating families of all sizes.

As you step inside, you'll be greeted by a large foyer that sets the tone for the open and inviting layout. The main floor seamlessly connects the living room, dining room, and kitchen, creating a perfect space for both daily living and entertaining. The kitchen boasts beautiful cabinets and granite countertops, making it as functional as it is stylish.

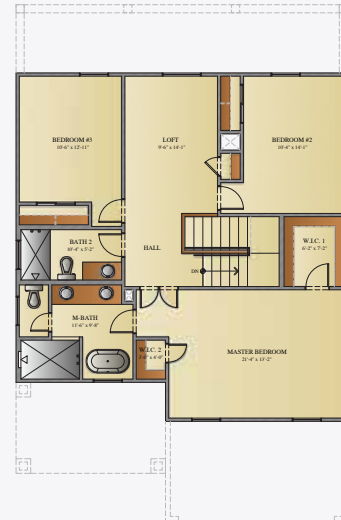
On the second floor, you'll find a very spacious loft, ideal for a family room, home office, or play area. The primary bedroom is generously sized and comes with a luxurious primary bathroom, complete with a walk-in shower and a standing tub, offering a serene retreat after a long day.

Additional features of the Abilene Home include a large covered patio in the backyard, perfect for outdoor relaxation and gatherings. The separate laundry room adds convenience, while the ample storage closet provides practical storage solutions.


With its thoughtful design and modern amenities, the Abilene Home is a perfect blend of comfort and elegance, ready to meet all your family's needs.




1ST. FLOOR PLAN
NOT TO SCALE




2ND. FLOOR PLAN
NOT TO SCALE


3 bedrooms


2 1/2 bathrooms


1,968 sq. ft.


2 car garage

FOR MORE INFORMATION
VISIT OUR OFFICE OR CALL US!

11440 MONTWOOD DR, EL PASO, TX 79936

915.246.8796

SCAN THE BARCODE TO VISIT
OUR WEBSITE



NOTICE TO CONSUMER: All marketing materials are SOLELY for concept illustration purposes. All square footages are MERELY approximations. As we improve our product, BIC HOMES reserves the independent right to CHANGES WITHOUT NOTICE before closing, among other items, the following: Sales prices, buyes incentives, availability lists, floor plans, elevations, features & finishes, specifications, materials, product brands, processes, completion dates, option/selection cut off dates, window and door styles, rock walls, gate and driveway locations, garage orientations, ceiling heights, colors, landscaping. HOA fees and lot premiums may apply in certain communities. All agreements must be in writing. Please read your purchase agreement for warranty information and construction standards. Rev. 9-4-2020

