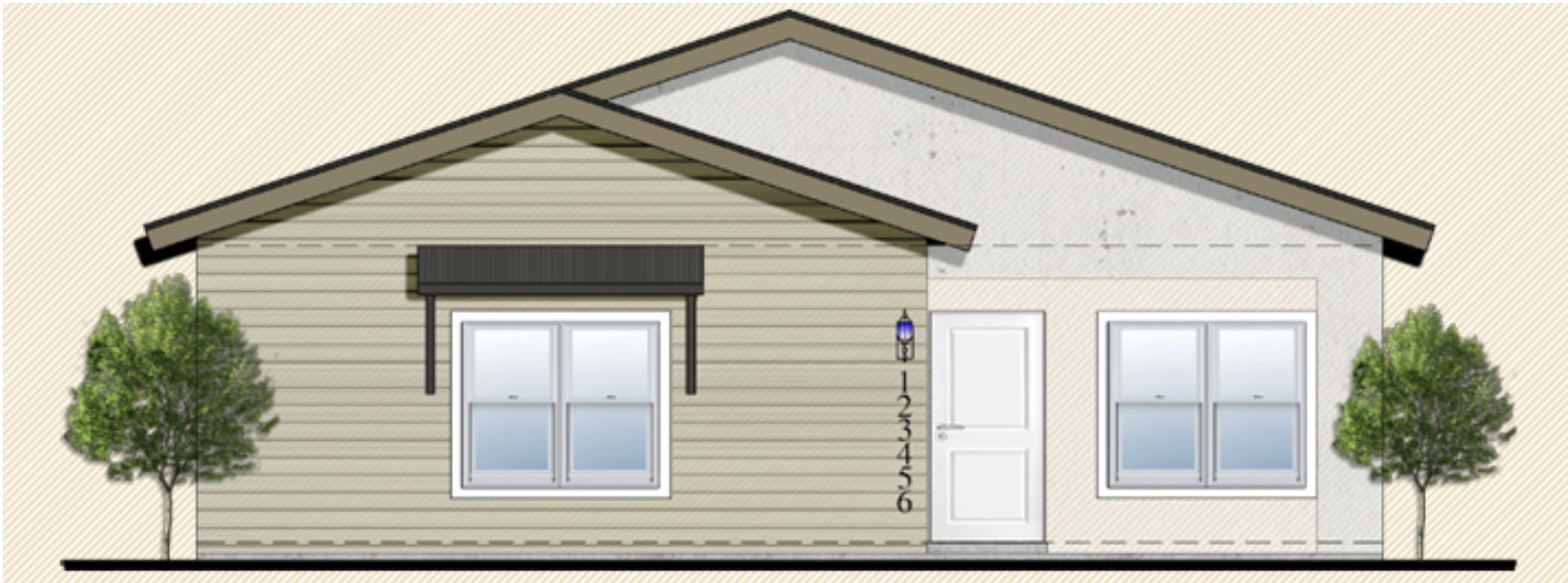




# PECOS

TRADITIONAL  
(TRD-Version 202601)

1,617 SQ. FT | 4 BEDS | 2.5 BATHS | 36'x68'



Discover the Pecos floor plan by BIC Homes, a thoughtfully designed home that blends comfort, style, and functionality. A welcoming covered front porch invites you inside, where a bright, open-concept layout unfolds. The living, dining, and kitchen areas flow seamlessly together, creating the perfect space for everyday living and entertaining. A rear patio door off the main living area provides easy access to the backyard, extending your living space outdoors.

Just beyond the dining area, a private hallway leads to the home's bedrooms, bathrooms, and laundry room, with convenient access to the garage. The two-car garage is discreetly located at the rear of the home, enhancing curb appeal while maintaining functionality.

The Pecos is thoughtfully appointed with upscale features, including granite or quartz countertops throughout and stylish kitchen pendant lighting. This energy-efficiency-certified home also includes an insulated garage and garage door, as well as a Manabloc plumbing system for added performance and efficiency. Sleek, modern finishes shine in every room, with tile flooring throughout the main living areas and plush carpeting in the bedrooms for added comfort. Every detail of the Pecos has been intentionally designed to support the way you live, gather, and grow—offering lasting comfort and a place to truly call home.

NOTICE TO CONSUMER: All marketing materials are SOLELY for concept illustration purposes. All square footage are MERELY approximations. As we improve our product, BIC HOMES reserves the independent right to CHANGES WITHOUT NOTICE before closing, among other items, the following: Sales prices, buyers incentives, availability lists, floor plans, elevations, features & finishes, specifications, materials, product brands, processes, completion dates, option/selection cut off dates, window and door styles, rock walls, gate, and driveway locations, garage orientations, ceiling heights, colors, landscaping. HOA fees and lot premiums may apply in certain communities. All agreements must be in writing. Please read your purchase agreement for warranty information and construction standards. Rev. 1-21-2026

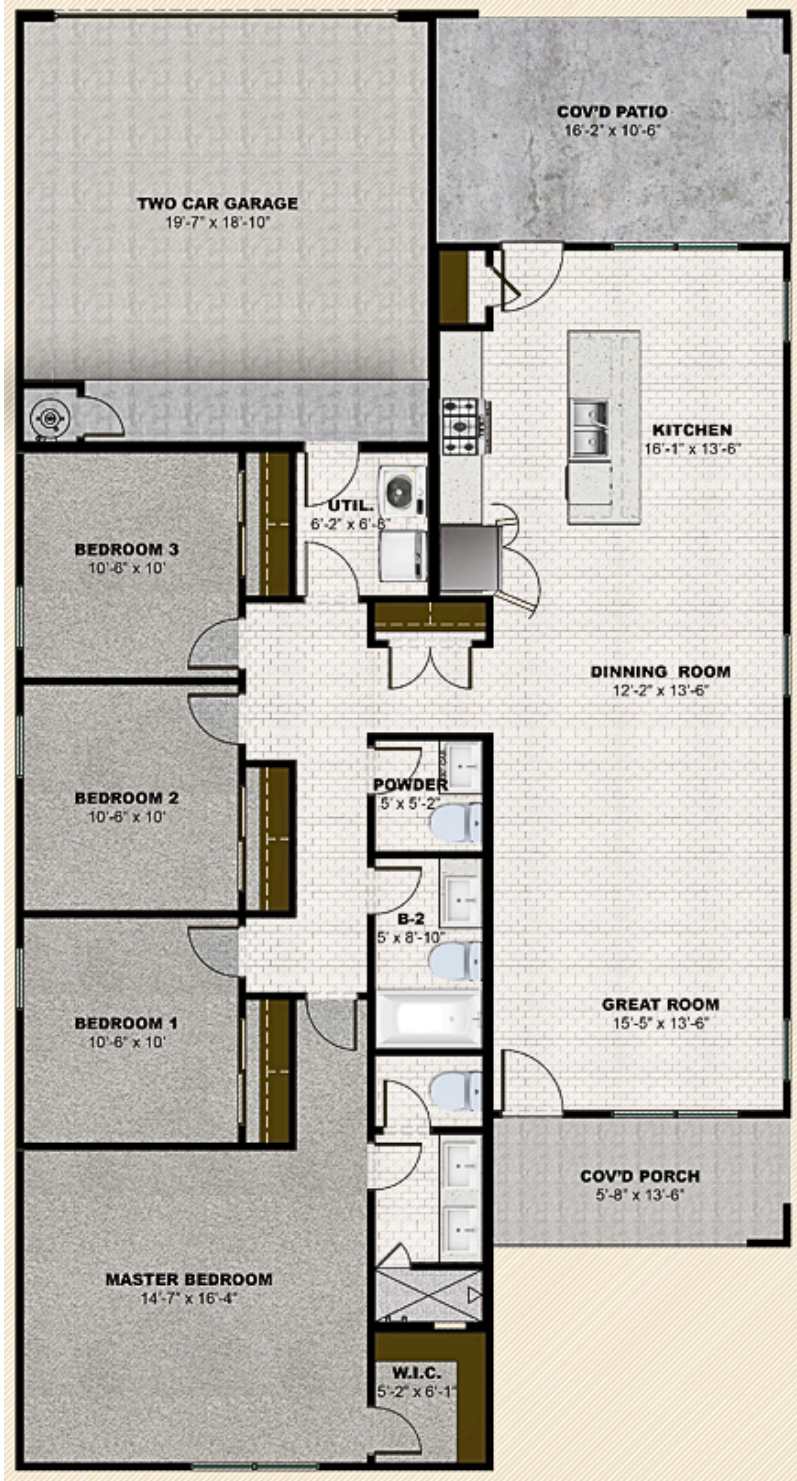




# PECOS

TRADITIONAL  
(TRD-Version 202601)

1,617 SQ. FT | 4 BEDS | 2.5 BATHS | 36'x68'



EXPLORE THIS FLOOR PLAN.  
SCAN THE CODE BELOW.



11440 MONTWOOD DR | EL PASO, TX | 79936 | 915.246.8796

[WWW.BICHOMESLPASO.COM](http://WWW.BICHOMESLPASO.COM)

NOTICE TO CONSUMER: All marketing materials are SOLELY for concept illustration purposes. All square footage are MERELY approximations. As we improve our product, BIC HOMES reserves the independent right to CHANGES WITHOUT NOTICE before closing, among other items, the following: Sales prices, buyers incentives, availability lists, floor plans, elevations, features & finishes, specifications, materials, product brands, processes, completion dates, option/selection cut off dates, window and door styles, rock walls, gate, and driveway locations, garage orientations, ceiling heights, colors, landscaping. HOA fees and lot premiums may apply in certain communities. All agreements must be in writing. Please read your purchase agreement for warranty information and construction standards. Rev. 1-21-2026





# PECOS

TRADITIONAL  
( TRD-Version 202601 )

1,617 SQ. FT | 4 BEDS | 2.5 BATHS | 36'x68'

## Standard Feature Sheet

### QUALITY CONSTRUCTION

#### **Soil Testing + Post Tension**

Ensures every home starts with a solid foundation. Engineered to last.

#### **16 Inch Stud Spacing**

Framed with precision: 16" on center for increased structural integrity and durability.

#### **2x4 Load Bearing Walls at 16" O.C. with Engineered Trusses**

Built with 2x4 load-bearing walls at 16" O.C. and engineered trusses for strong, reliable structural support.

#### **Efficient Warranty Support**

We keep warranty service in-house and resolved issues within 4 days last year.

#### **Three Phase Private Inspections**

3 Detailed inspections: before pouring the slab, after finishing framing, and when home is complete.

All inspections performed by independent third-party inspectors.

#### **Dunn Edwards Paint**

High-performance, long-lasting color and protection, with low VOC formulas for healthier indoor air.

#### **Sherwin Williams Total Wall Synthetic Stucco**

Engineered to expand and contract with your home, reducing cracks and expanding lifespan.

#### **Brocade Texture on Walls and Ceilings with Rounded Corners on Main Walls**

Timeless and durable

#### **Standing Showers**

Sleek and streamlined look aligning with modern bathroom design.

#### **Rock Wall (varies by area and site)**

A structural, material-based feature tied to durability.

#### **Detailed Orientation and Walkthrough**

Our team provides a thorough orientation and final walkthrough before closing.

### WARRANTY

#### **1 Year Builder Warranty**

We cover workmanship and defective materials during your first year of homeownership.

#### **2-10 Year Home of Texas Warranty**

2-year system protection (HVAC, Plumbing, Electrical, and Roof)  
10-year structural coverage

\*Style and Color defined by Color Selection

### COMFORT

#### **Manabloc Plumbing System**

Fewer leaks, better pressure, and easy maintenance.

#### **14 SEER Air Conditioning System & 80% Efficiency Heater Unit**

Energy efficient cooling and heating for year-round comfort in every room.

#### **Spray Foam Insulation**

Reduces outside noise and improves indoor temperature stability which results in a quiet, cozy environment.

#### **Ceramic Tile Flooring**

In main living areas and bathrooms

#### **Carpet**

In all bedrooms and closets

#### **Vinyl Mini Blinds**

Privacy and light control.

#### **Ceiling Fans in Living Room and Bedrooms**

Enhance airflow to maintain pleasant indoor temperature.

#### **Exterior Power Outlets**

Convenience for outdoor modern living and activities.

#### **Insulated Garage and Garage Door**

Maintains a comfortable interior temperature, reduces noise, and creates an enjoyable, usable space.

#### **Built-In Shelves in Garage**

Improves organization within the garage.

#### **Christmas Light Switch**

Simple and convenient control for seasonal lighting.

### ENERGY EFFICIENCY

#### **100% ENERGY STAR® Certified**

Enjoy consistent comfort, reduced utility costs, and lasting savings.

#### **Double Pane Low E Windows**

Helps reduce heat transfer and keeps your home cooler in the summer and warmer in the winter.

#### **Energy Efficient Appliances**

Stylish and functional appliances that use less power.

#### **Spray Foam Insulation**

Keeps heat and cold out to improve energy efficiency

#### **LED Disc Lighting**

Durable and use less electricity for lower costs.

#### **Natural Gas Tank Water Heater**

Delivers reliable hot water with efficient natural gas performance.

#### **High Efficiency Duct System**

Minimizes air loss and improves airflow.



# PECOS

TRADITIONAL  
(TRD-Version 202601)

1,617 SQ. FT | 4 BEDS | 2.5 BATHS | 36'x68'

## Standard Feature Sheet

### MODERN DESIGNS

#### **New Tile Collections**

Expanded collections with modern tile patterns

#### **Updated Cabinet Looks**

New cabinet colors and styles designed to reflect today's interior design trends.

#### **Floor Plans Updated Annually**

We improve our layouts every year based on buyer feedback and lifestyle trends.

#### **Fiberglass Faux Wood Front Door**

Offers contemporary curb appeal with stylish, low-maintenance finish.

#### **Atrium Fiberglass Rear Door with Integrated Mini-Blinds**

Effortless light and privacy control

#### **2.5 Inch Baseboards and Door Casings**

A streamline aesthetic that defines modern interior design.

#### **Framed or Frameless Mirrors\***

Both styles contribute to a contemporary aesthetic.

#### **Vanity Mounted Lighting**

Clean and focused illumination.

#### **Lighting Package\***

Different options for a contemporary look throughout the home\*

#### **Pre-Wire Setups For:**

1 Telephone Line, Living Room Cable TV Jacks & Data Port CAT5, 1 DSS Satellite, 1 Fiber Tube for Internet

#### **Wall-Mounted Front Exterior Lights**

Enhance curb appeal with clean and functional illumination.

#### **Rear Floodlight**

Practical exterior lighting in backyard.

#### **Shingle Roof**

Classic and durable.

#### **Pre-Wired for Garage Door Opener**

Ready to use setup, simple and convenient.

#### **220V Outlet**

Supports modern equipment needs.

### LANDSCAPE

#### **Landscape rock\***

From side gates to front property line and parkway

#### **Choice of two-tone rock or turf option\***

Clean and finished look to complement the home's exterior.

### LUXURY

#### **3 cm Granite or Quartz Countertops\***

Durable, high-end materials provide a refined appearance.

#### **Upper Wall Cabinetry in Laundry Room**

Convenient, elevated storage that keeps essentials within reach.

#### **9-Foot-High Ceilings**

Elevate the sense of space and creates an upscale feel.

#### **Standard Kitchen**

High-end finishes, premium appliances, and an elevated design.

Includes:

Stainless Steel 5 Burner Freestanding Range with Oven

Microwave-Hood

Dishwasher

8-inch-deep stainless-steel sink

Pantry

#### **Ceramic Tile Backsplash in Kitchen**

Enhances style and luxury of the kitchen.

#### **Cabinetry with Crown Molding and Adjustable Shelves**

Elevate the look and functionality, going beyond standard cabinetry.

#### **Built-In Wine Rack**

Adds convenience and elegance to kitchen.

#### **Pendant Lighting**

Stylish high-end element creates a refined focal point in the space.

#### **Ceramic Tile Shower Walls with Optional Decorative Trim**

Elevated finish that goes above standard bathroom design.

### SMART HOME

#### **Ring Doorbell + Ring Alarm System**

Stay protected with a smart security system including motion sensors, door alerts, and mobile notifications. Integrated with Alexa.

#### **Smart Thermostat**

Control your home's temperature remotely and optimize energy use.

#### **Alexa Show or Echo Smart Speaker**

Hands-free control of your home. Use voice commands to check security camera, play music, and other actions.

#### **Additional Smart Options Available**

Including Smart Lock, Smart Switches, and Leak/Freeze Sensors.

\*Style and Color defined by Color Selection