



KILLEEN

TRADITIONAL
(TDI-Version 202601)

1,877 SQ. FT | 4 BEDS | 2.5 BATHS | 40'X60'



Discover the Killeen floor plan by BIC Homes, beautifully presented in a Traditional elevation that blends timeless architecture with inviting curb appeal. Classic gabled rooflines, balanced window placement, and a welcoming front porch create a warm, familiar aesthetic that feels instantly like home. Thoughtful exterior details and a harmonious mix of textures give this elevation a grounded, durable character.

Step inside and you're welcomed by a well-appointed foyer leading to the first two bedrooms and a full bath. As you continue down the hallway, you'll find the third bedroom, a convenient half bath, and access to the insulated garage. Opposite the garage entry sits the laundry room, ideally positioned for everyday ease. The hallway then opens into the heart of the home—an open-concept living space where the dining area flows seamlessly into the kitchen, and the living room offers a cozy, tucked-away retreat.

The expansive primary suite provides a peaceful escape, featuring large windows, a generous walk-in closet, and a luxurious bathroom. This spa-inspired space includes a freestanding tub and shower combination, dual vanities, and an additional oversized walk-in closet for exceptional comfort and storage. A rear glass sliding door fills the main living area with natural light and opens to the covered patio, creating the perfect setting for outdoor relaxation and year-round enjoyment.

Altogether, the Killeen floor plan in its Traditional elevation delivers classic charm, modern comfort, and thoughtful design—crafted to welcome you home every day.

NOTICE TO CONSUMER: All marketing materials are SOLELY for concept illustration purposes. All square footage are MERELY approximations. As we improve our product, BIC HOMES reserves the independent right to CHANGES WITHOUT NOTICE before closing, among other items, the following: Sales prices, buyers incentives, availability lists, floor plans, elevations, features & finishes, specifications, materials, product brands, processes, completion dates, option/selection cut off dates, window and door styles, rock walls, gate, and driveway locations, garage orientations, ceiling heights, colors, landscaping. HOA fees and lot premiums may apply in certain communities. All agreements must be in writing. Please read your purchase agreement for warranty information and construction standards. Rev. 1-21-2026

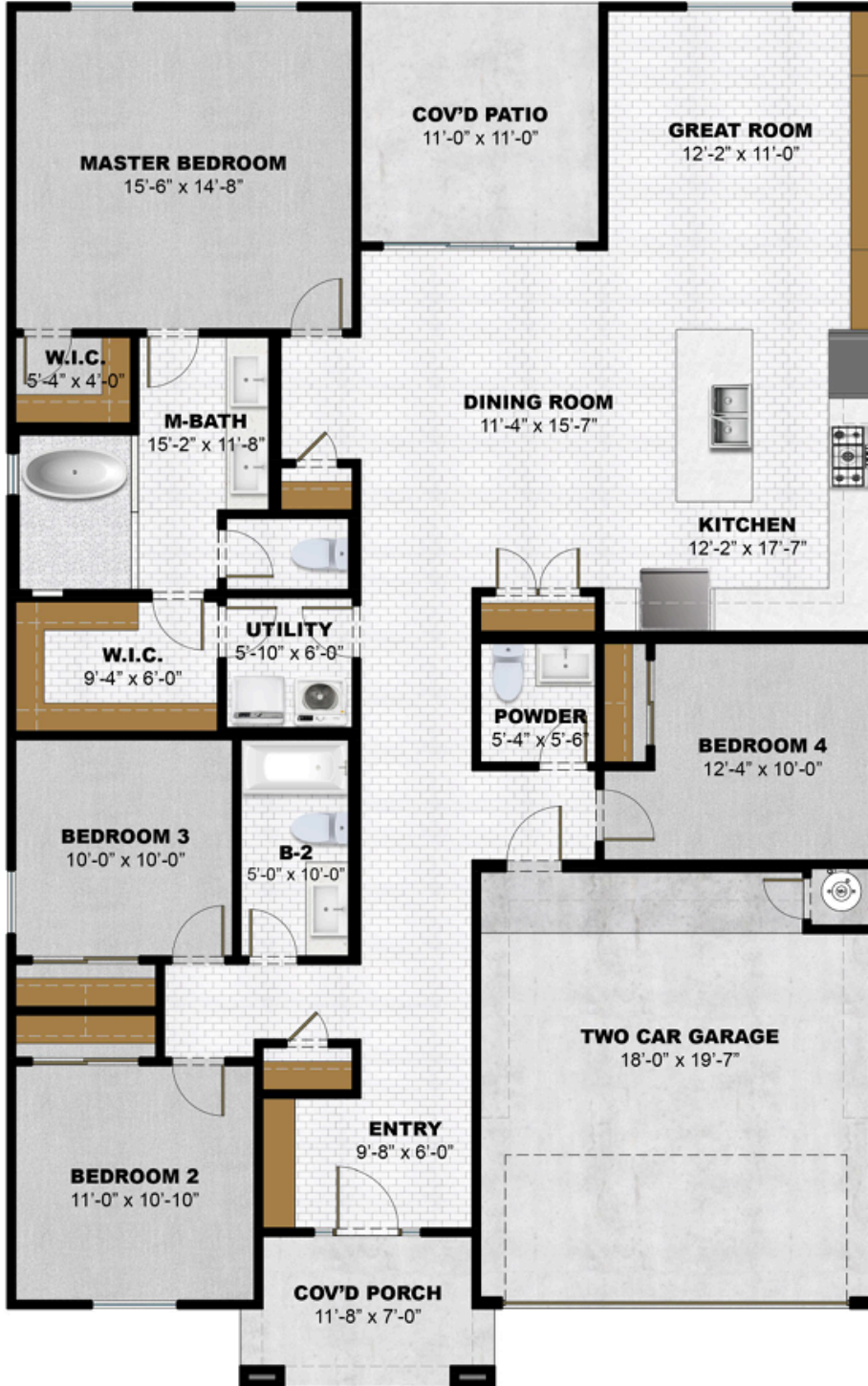




KILLEEN

TRADITIONAL
(TDI-Version 202601)

1,877 SQ. FT | 4 BEDS | 2.5 BATHS | 40'X60'



EXPLORE THIS FLOOR PLAN.
SCAN THE CODE BELOW.



11440 MONTWOOD DR | EL PASO, TX | 79936 | 915.246.8796

WWW.BICHOMESLAPASO.COM

NOTICE TO CONSUMER: All marketing materials are SOLELY for concept illustration purposes. All square footage are MERELY approximations. As we improve our product, BIC HOMES reserves the independent right to CHANGES WITHOUT NOTICE before closing, among other items, the following: Sales prices, buyers incentives, availability lists, floor plans, elevations, features & finishes, specifications, materials, product brands, processes, completion dates, option/selection cut off dates, window and door styles, rock walls, gate, and driveway locations, garage orientations, ceiling heights, colors, landscaping. HOA fees and lot premiums may apply in certain communities. All agreements must be in writing. Please read your purchase agreement for warranty information and construction standards. Rev. 1-21-2026





KILLEEN

TRADITIONAL
(TDI-Version 202601)

1,877 SQ. FT | 4 BEDS | 2.5 BATHS | 40'X60'
Standard Feature Sheet

QUALITY CONSTRUCTION

Soil Testing + Post Tension

Ensures every home starts with a solid foundation. Engineered to last.

16 Inch Stud Spacing

Framed with precision: 16" on center for increased structural integrity and durability.

2x4 Load Bearing Walls at 16" O.C. with Engineered Trusses

Built with 2x4 load-bearing walls at 16" O.C. and engineered trusses for strong, reliable structural support.

Efficient Warranty Support

We keep warranty service in-house and resolved issues within 4 days last year.

Three Phase Private Inspections

3 Detailed inspections: before pouring the slab, after finishing framing, and when home is complete.

All inspections performed by independent third-party inspectors.

Dunn Edwards Paint

High-performance, long-lasting color and protection, with low VOC formulas for healthier indoor air.

Sherwin Williams Total Wall Synthetic Stucco

Engineered to expand and contract with your home, reducing cracks and expanding lifespan.

Semi-flat wall texture with straight angle corners

Adds a clean, modern finish enhancing sophistication.

Standing Showers

Sleek and streamlined look aligning with modern bathroom design.

Rock Wall (varies by area and site)

A structural, material-based feature tied to durability.

Detailed Orientation and Walkthrough

Our team provides a thorough orientation and final walkthrough before closing.

WARRANTY

1 Year Builder Warranty

We cover workmanship and defective materials during your first year of homeownership.

2-10 Year Home of Texas Warranty

2-year system protection (HVAC, Plumbing, Electrical, and Roof)
10-year structural coverage

COMFORT

Manabloc Plumbing System

Fewer leaks, better pressure, and easy maintenance.

14 SEER Air Conditioning System & 80% Efficiency Heater Unit

Energy efficient cooling and heating for year-round comfort in every room.

Spray Foam Insulation

Reduces outside noise and improves indoor temperature stability which results in a quiet, cozy environment.

Ceramic Tile Flooring

In main living areas and bathrooms

Carpet

In all bedrooms and closets

Plantation Shutters

Premium window coverings, enhances privacy and light control.

Ceiling Fans in Living Room and Bedrooms

Enhance airflow to maintain pleasant indoor temperature.

Exterior Power Outlets

Convenience for outdoor modern living and activities.

Insulated Garage and Garage Door

Maintains a comfortable interior temperature, reduces noise, and creates an enjoyable, usable space.

Built-In Shelves in Garage

Improves organization within the garage.

Christmas Light Switch

Simple and convenient control for seasonal lighting.

ENERGY EFFICIENCY

100% ENERGY STAR® Certified

Enjoy consistent comfort, reduced utility costs, and lasting savings.

Double Pane Low E Windows

Helps reduce heat transfer and keeps your home cooler in the summer and warmer in the winter.

Energy Efficient Appliances

Stylish and functional appliances that use less power.

Spray Foam Insulation

Keeps heat and cold out to improve energy efficiency

LED Disc Lighting

Durable and use less electricity for lower costs.

Natural Gas Tankless Water Heater

Delivers reliable hot water with efficient natural gas performance.

High Efficiency Duct System

Minimizes air loss and improves airflow.



KILLEEN

TRADITIONAL
(TDI-Version 202601)

1,877 SQ. FT | 4 BEDS | 2.5 BATHS | 40'X60'
Standard Feature Sheet

MODERN DESIGNS

New Tile Collections

Expanded collections with modern tile patterns

Updated Cabinet Looks

New cabinet colors and styles designed to reflect today's interior design trends.

Floor Plans Updated Annually

We improve our layouts every year based on buyer feedback and lifestyle trends.

Fiberglass Faux Wood Front Door

Offers contemporary curb appeal with stylish, low-maintenance finish.

2 Panel Sliding Glass Rear Door

Provides open and bright spaces and provides seamless indoor-outdoor flow.

2.5 Inch Baseboards and Door Casings

A streamline aesthetic that defines modern interior design.

Framed or Frameless Mirrors*

Both styles contribute to a contemporary aesthetic.

Vanity Mounted Lighting

Clean and focused illumination.

Lighting Package with Upgraded Brand*

Progress Lighting or equivalent brand*

Pre-Wire Setups For:

1 Telephone Line, Cable TV Jacks & Data Port CAT5 on all Bedrooms + Living Room, 1 DSS Satellite, 1-Fiber Tube for Internet

Wall-Mounted Front Exterior Lights

Enhance curb appeal with clean and functional illumination.

Rear Floodlight

Practical exterior lighting in backyard.

Shingle Roof

Durable and timeless.

Pre-Wired for Garage Door Opener

Ready to use setup, simple and convenient.

220V Outlet

Supports modern equipment needs.

LANDSCAPE

Landscape rock*

From side gates to front property line and parkway

Choice of two-tone rock or turf option*

Clean and finished look to complement the home's exterior.

*Style and Color defined by Color Selection

LUXURY

3 cm Granite or Quartz Countertops*

Durable, high-end materials provide a refined appearance.

Upper Wall Cabinetry in Laundry Room

Convenient, elevated storage that keeps essentials within reach.

Accent Ceramic Tile in Laundry Room

Makes your laundry room stand out

9-Foot-High Ceilings

Elevate the sense of space and creates an upscale feel.

Gourmet Kitchen

High-end finishes, upgraded brand appliances (Ex: Samsung, LG, or equivalent)

Includes:

5 Burner Cooktop

Vent Hood

Built-in microwave

Built-in oven

Dishwasher

8-inch-deep stainless-steel sink

Ceramic Tile Backsplash in Kitchen

Enhances style and luxury of the kitchen.

Cabinetry with Crown Molding and Adjustable Shelves

Elevate the look and functionality, going beyond standard cabinetry.

Built-In Wine Rack

Adds convenience and elegance to kitchen.

Pendant Lighting

Stylish high-end element creates a refined focal point in the space.

Ceramic Tile Shower Walls with Optional Decorative Trim

Elevated finish that goes above standard bathroom design.

Epoxy coat on Garage

Low maintenance and durable, enhances aesthetics.

Freestanding Bathtub

Indulge in true relaxation and luxury.

SMART HOME

Ring Doorbell + Ring Alarm System

Stay protected with a smart security system including motion sensors, door alerts, and mobile notifications. Integrated with Alexa.

Smart Thermostat

Control your home's temperature remotely and optimize energy use.

Alexa Show or Echo Smart Speaker

Hands-free control of your home. Use voice commands to check security camera, play music, and other actions.

Additional Smart Options Available

Including Smart Lock, Smart Switches, and Leak/Freeze Sensors.